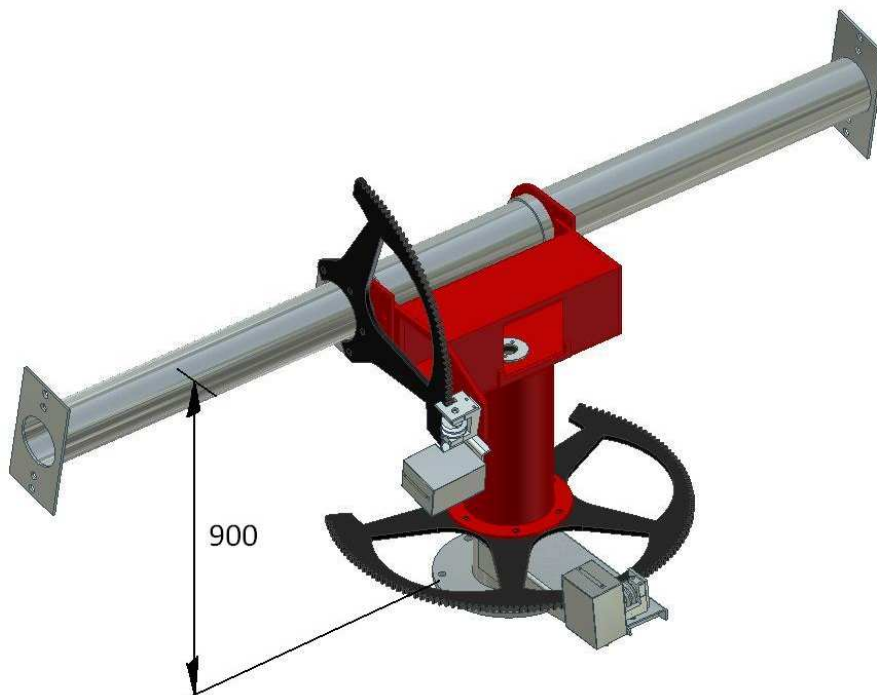
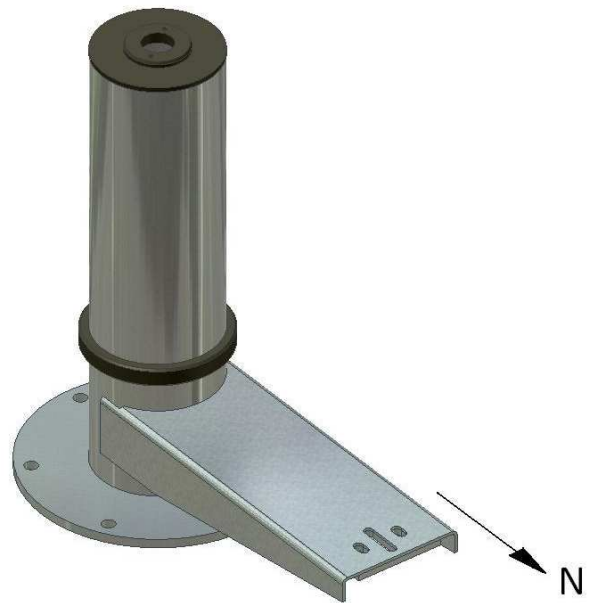
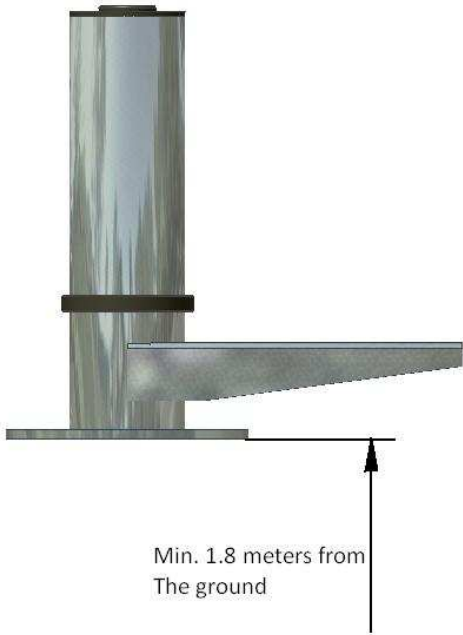




FEINA SOLAR TRACKER FEATURES SF28



- Fixed part placed in a column from iron or concrete (Galvanized)
- Moving tube that rotates around the mast (Galvanized)
- Gear Module 6, Diameter 1008mm, hourly movement.
- Gear Module 6, Diameter 1008mm, inclination movement.
- Axle, diameter 165 mm, L=2800 mm, structure inclination. (Galvanized).
- Two motor sets with their gears, their headless nuts and turn counter switch and protection box (Galvanized and coated with zinc).
- Two crosswise bars of 5 meters for supporting the transversal bars (Galvanized)
- An electronic box with the connections for the motors and the micro switch
It is designed for withstanding winds of 140 km/h with 28 m² of panel surface.

Functioning:

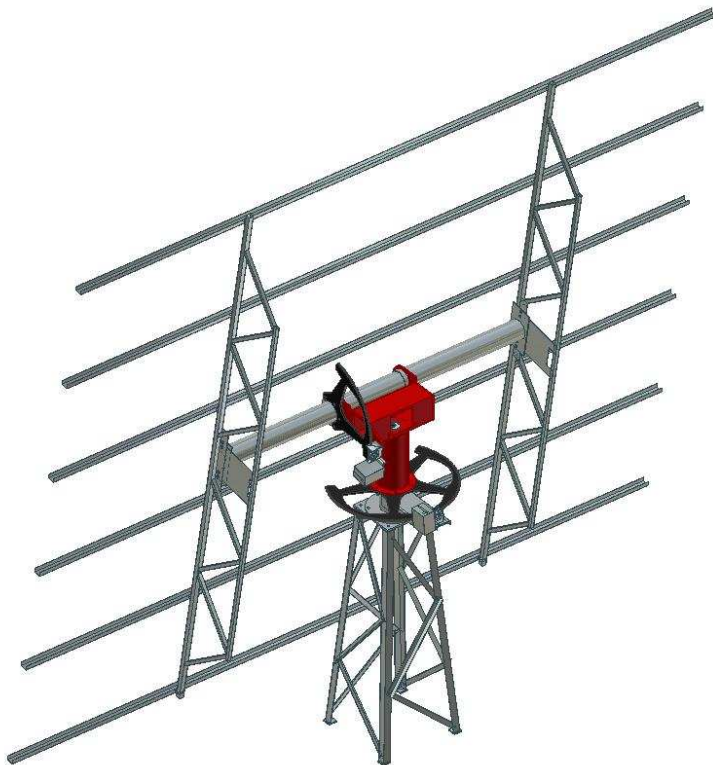
Once the date, time and location coordinates are entered into the screen, with the buttons, the sun tracker is set.

From this moment on, the tracker is working. Each X amount of minutes (from 1 to 90, according to what has been programmed), it calculates the position and moves the tracker if necessary.

At the moment that the sun sets, in other words, when the inclination of the sun over the horizon is negative, the tracker returns to the east and sets near the horizon again (some 80 degrees regarding the vertical).

At the time that the sun comes up, the tracker goes back to an almost vertical position. From this moment on it carries out its normal daily movement.

The tracker goes horizontal if wind exceeds a determined velocity, calculated by an anemometer. It has also outlets to monitorize it's operation from Internet.



Trackers Feina,
Fàbrica el Molinet s/n
08250 Sant Marti de Torruella
(Barcelona)
Tel:93 8361827 / 93 8751001
feina@tracker.cat
<http://www.tracker.cat>

